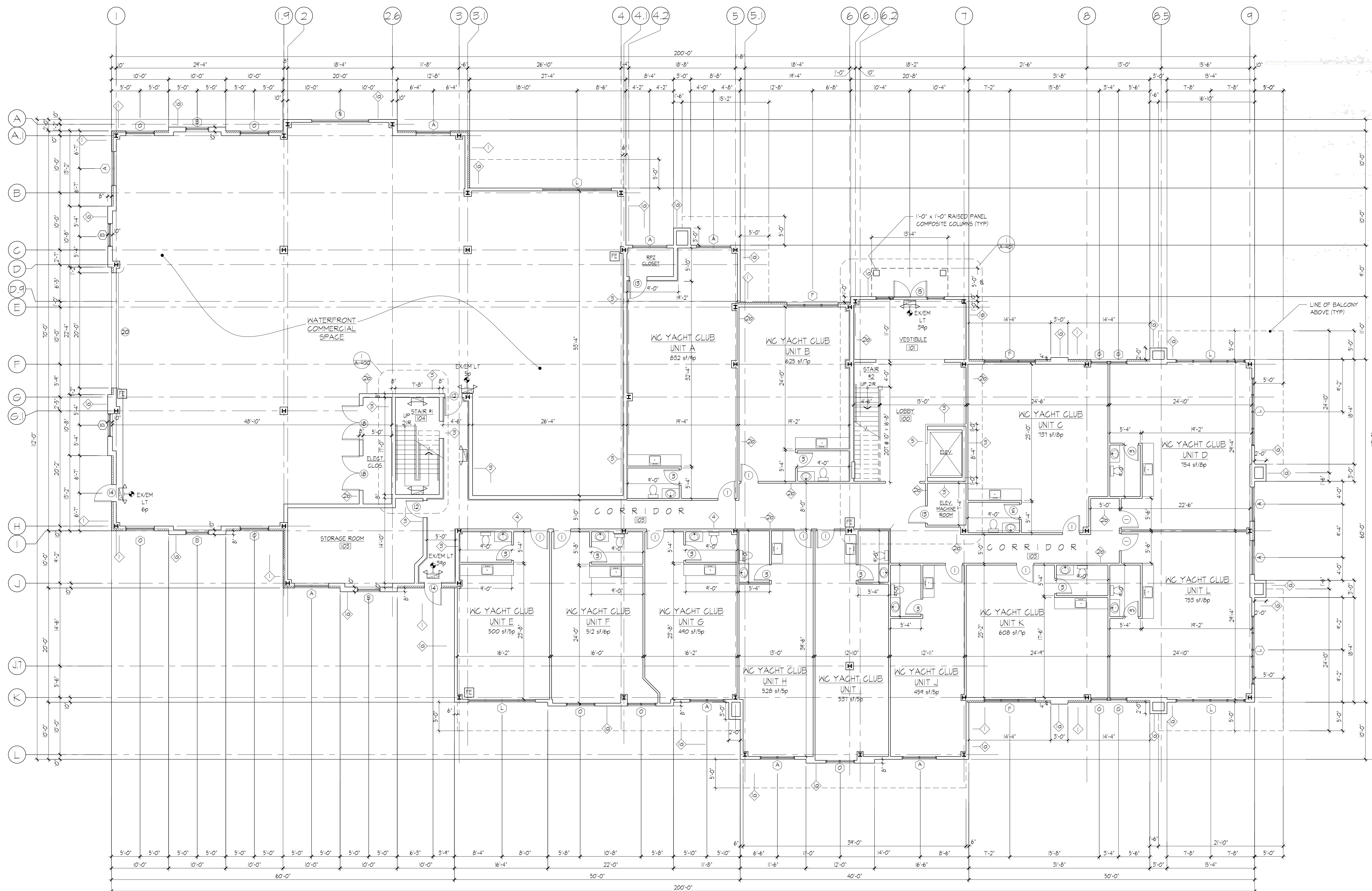




19-80

ISSUED



- 3/22/21 REV. UNIT TITLES
3/1/21 UPDATE TO GARAGE
2/10/21 UPDATE MECH RM. UNITS H and I, and PARKING
1/1/20 UPDATE PARKING
10/20/20 UPDATE MECHANICAL ROOMS
8/22/20 UPDATE WINDOWS
6/2/20 REVISED EXTERIOR WALLS - REMOVED BRICK (SEE ELEVATIONS)
3/10/20 GENERAL COORDINATION
3/10/20 GENERAL COORDINATION

REVISIONS

THESE PLANS ARE AN INSTRUMENT OF SERVICE AND ARE THE PROPERTY OF THE ARCHITECT. INFRINGEMENTS WILL BE PROSECUTED.

CONTRACTOR SHALL VERIFY ALL FIELD CONDITIONS AND DIMENSIONS AND SHALL BE RESPONSIBLE FOR FIELD FIT AND QUANTITY OF WORK. NO ALLOWANCE SHALL BE MADE ON THE BEHALF OF THE CONTRACTOR FOR ANY ERROR OR NEGLIGENCE ON HIS PART.

123 Sterling Avenue, LLC

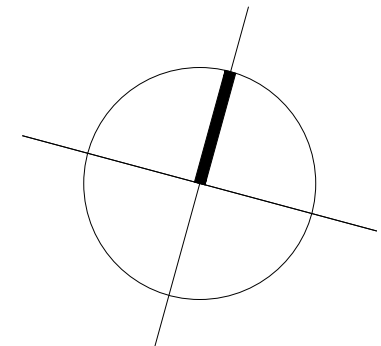
123 Sterling Avenue
Greenport, New York

FIRST FLOOR PLAN

12/7/2018
DATE **A-101**

SCALE 4 OF 29
DRAWN BY JVB
CHECKED BY DD

First Floor Plan
1/8" = 1'-0"



- LEGEND**
- SURFACE MTD. EMERGENCY/EXIT LIGHT 4 SIGN COMBINATION WITH LIGHT EMITTING DIODE LAMPS WITH EMERGENCY BATTERY PACK (2 HEAD see plan) (8" x 11 1/2" x 2 3/8"), DIRECTIONAL ARROWS per PLAN
 - SURFACE MTD. EMERGENCY/EXIT LIGHT WITH EMERGENCY BATTERY PACK (2 HEAD see plan)
 - FIRE EXTINGUISHER - TYPE 2A
 - BEARING WALL 2" x 6" @ 16" O/C

- NOTE:**
- ALL INTERIOR PARTITIONS ARE WALL TYPE 2 UON.
 - ALL PLUMBING CHASE PARTITIONS TYPE 4 UON.
 - SEE UNIT PLANS FOR ADDITIONAL INFORMATION.
 - BUILDING IS 100% SPRINKLERED - TO BE FILED UNDER SEPARATE APPLICATION, TO COMPLY WITH NFPA/15 REQUIREMENTS.
 - BUILDING IS EQUIPPED WITH FIRE ALARM SYSTEM TO COMPLY WITH NFPA REQUIREMENTS.

EGRESS ANALYSIS (SPRINKLERED) - 1st FLOOR			
OCCUPANCY	B and S-1	MIN. CORRIDOR WIDTH	44"
TOTAL NO. OF PERSONS	84	ACTUAL CORRIDOR WIDTH	5'-0"
MAX. TRAVEL DISTANCE	250'-0"	CORRIDOR CAPACITY	0.15/PERSON (5'-0" width) = 480 PERSON
ACTUAL TRAVEL DISTANCE	84'-0"	ACTUAL NO. OF PERSONS/CORRIDOR	78
MIN. STAIRWAY WIDTH	44"	MAX. DEAD END	50'-0" (SPRINKLERED)
ACTUAL STAIRWAY WIDTH	44" ± 54"	ACTUAL DEAD END	44'-0"
STAIRWAY CAPACITY	0.2/PERSON (44" width) = 220 PERSON/STAIR	DOOR CAPACITY	0.15/PERSON 5'-0" = 240 PERSON (2) 3'-0" DOORS PROVIDED = 480 PERSON
ACTUAL NO. OF PERSON/STAIR	N/A		